

SET BM TOP HYDRANT
 BOLT & OPEN ARROW 3/8"
 ELEV. = 120.89'

POLE 13

POLE 13 1/2

POLE 14

POLE 15

POLE 16

POLE 17

MILLBURY STREET
 1982 COUNTY LAYOUT

CTB
 RIM=113.00'
 DASH

CTB
 RIM=113.53
 RIM=113.23'
 INV.=107.36'

CTB
 RIM=120.79'
 INV.=117.43'

CTB
 RIM=120.79'
 INV.=117.99'

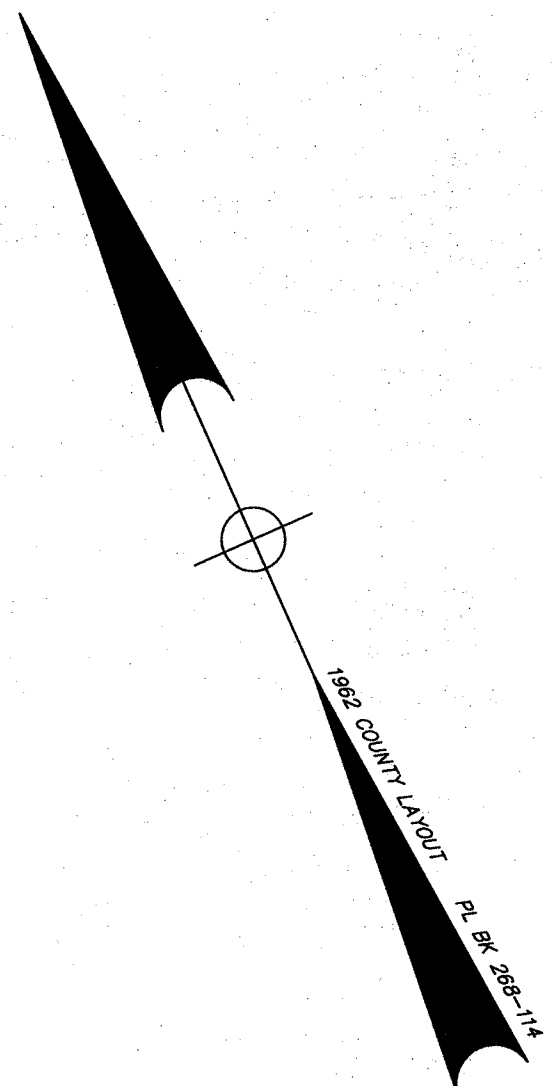
ZONING OFFSET

HATCHED AREA
 DEPICTS AREA OF
 DEVELOPMENT

AUBURN INDUSTRIAL
 DEVELOPMENT CORPORATION
 BK 11824-77
 PL BK 400-37
 PARCEL A

MILL STREET

SET BM MN POLE 2
 ELEV.=108.20'



EXISTING CONDITIONS PLAN

PLAN OF LAND IN
AUBURN, Mass.

PREPARED FOR

AUBURN INDUSTRIAL DEVELOPMENT CORP.

SCALE: 1" = 30' AUGUST 2014

David E. Ross Associates, Inc.

CIVIL ENGINEERS - LAND SURVEYORS
 ENVIRONMENTAL CONSULTANTS
 PO BOX 368-111 FITCHBURG RD, AYER, MA 01432
 (TEL. NO. 978-772-6232)

JOB NO. 29952 SHEET 1 OF 1 PLAN NO. L-XXXX

